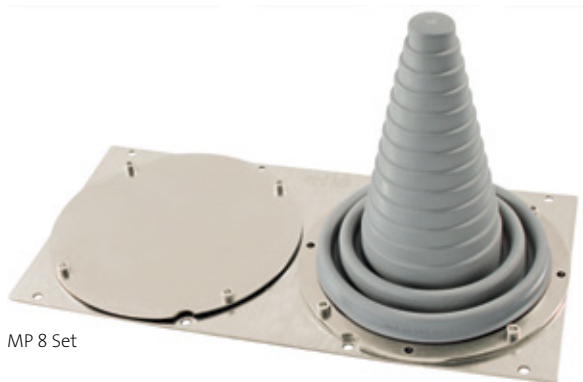


# MP

## Module plate, equipped



MP 8 Set



MP 6 Set

Type	Order No.	Scope of delivery
------	-----------	-------------------

MP 6 Set	43883.001	<p>MP 6, 338 × 168 × 2 mm                      5× KEL-DPF 50                      1× locking screw M50</p>
MP 8 Set	43894.001	<p>MP 8, 338 × 168 × 2 mm                      1× KEL-ULTRA flex                      1× BPM-ULTRA</p>

### Product description

KEL / BPM are preassembled in all module plate sets. The module plates can be fixed on the following positions:

- Separation plates
- Closed bottom of the switch box
- 25 mm breadboard of the switch box
- 25 mm breadboard bars (Rittal TS System)

The shipment includes a suitable gasket.

### Specification

Material **Steel, zinc-plated**  
**Aluminium (Order No. 43883)**  
 Dimension **338 × 168 × 2 mm**